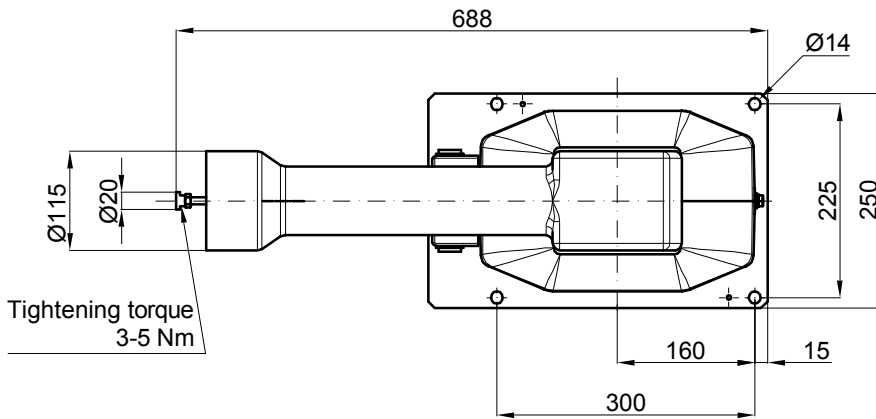
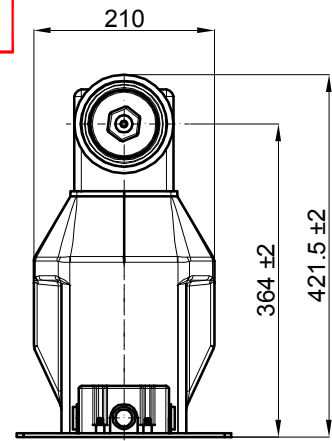
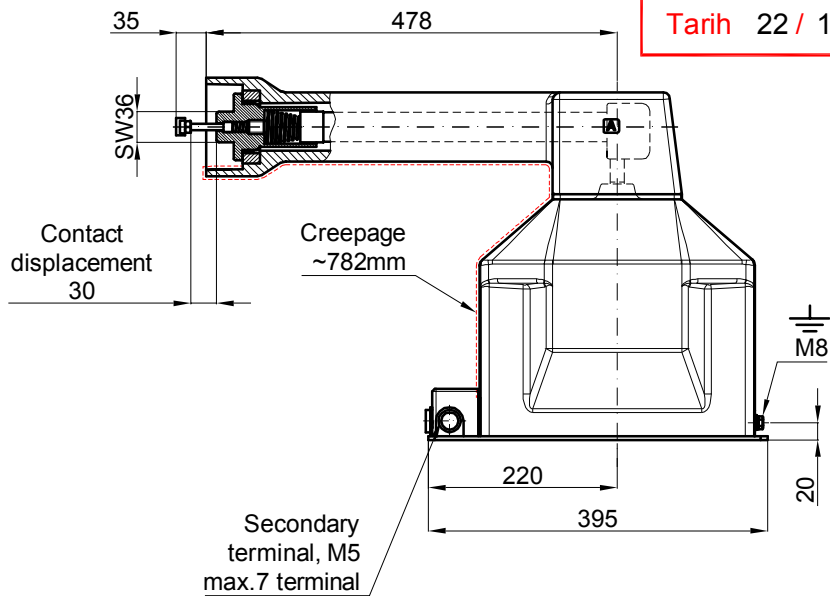
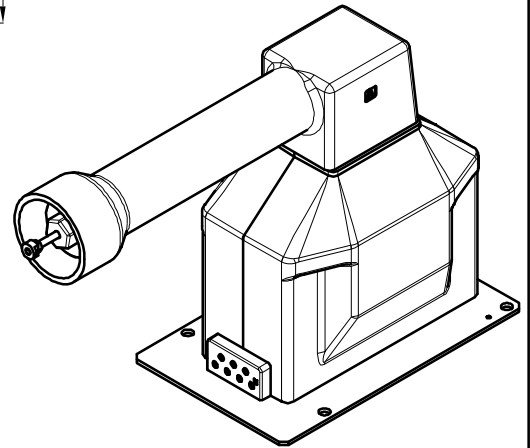


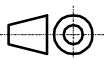

DEĞİŞİKLİK
TEKNİK BÜRO
Tarih 22 / 10 / 2018



SCREW	Tightening Torque Nm
M5	2-2,5
M8	16-20



NOT : Bu üründe kullanılacak sigortalar için TL SP 002 nolu talimata bakınız.

										Cast-resin						
QTY	DESCRIPTION					POS	DIMENSIONS		WEIGHT	PART OR DIN NO.		MATERIAL				
	NO	DATE	NAME	MODIFICATION		D	23-06-16	Nilüfer	Tightening torque was added.							
	A	25-12-08	AYŞE	Fuse code changed		E	30-06-16	Nilüfer	Tightening torque was changed.							
	B	26-05-09	Nilüfer	Fuse table canceled,note added		F	22-10-18	Nilüfer	Design was changed.							
	C	11-09-14	AYŞE	Design changed		16-10-08		PLATE CODE		3006694						
	TOLERANS DIN ISO 2768-1 (g)		VBF36-FS FUSED, VOLTAGE TRANSFORMER					BOX CODE		3003001		REV.				
								398_1				F				
	SCALE 1/1							REPLACES THE DRAWING NO.					DR'N			
													CH'D			
			 OG Ölçü Trafo					APP'D								
								C.C		MT						